



Lewis Carroll
Imtiaz Kaderbhoy



KILTS AND KENTE
PRODUCTION

The 3-hour Murder Mystery Experience

- A unique experience, blending compelling storylines and real-world business analysis challenges.
- Join us to explore, test, and refine your skills in a thrilling, immersive environment.



KILTS AND KENTE
PRODUCTION

Ready to unlock the secrets and elevate your expertise?

Develop your negotiation and persuasion techniques to influence outcomes effectively.

Delve into the mystery to sharpen your analytical thinking and problem-solving skills under pressure.

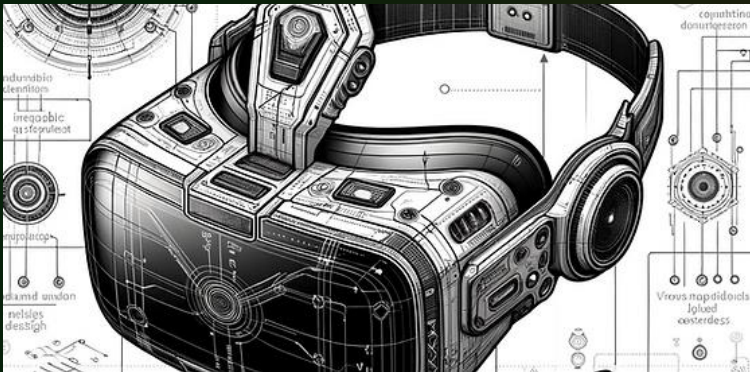
Enhance your teamwork and communication while building trust and collaboration within your team.



The Players

The Product: The MindBridge VR© Goggles

MindBridge VR© Goggles revolutionizes the business analysis world by using virtual reality (VR) and artificial intelligence (AI) to empower projects to achieve unprecedented alignment on project requirements during the crucial initial requirements elicitation and definition phase.



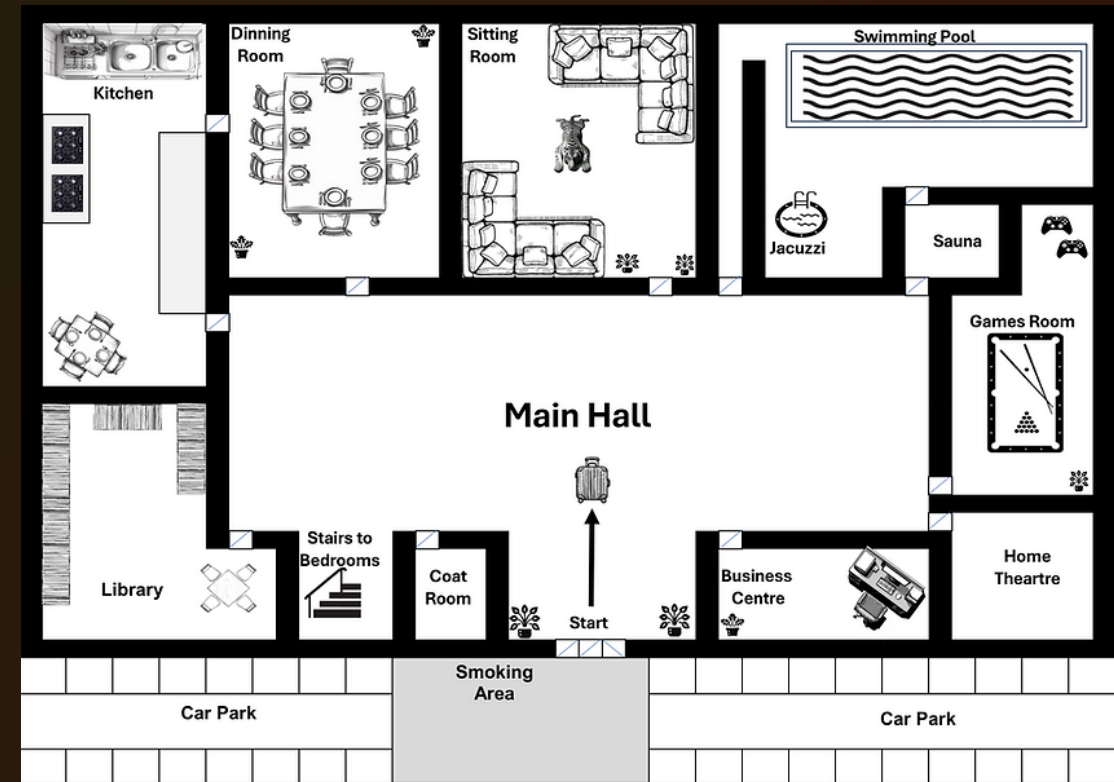
This revolutionary solution ensures that project requirements are fully aligned from the outset.

MindBridge VR© Goggles minimises the need for costly follow-ups and re-alignments, making the most of the investment by delivering unparalleled results right from the beginning.



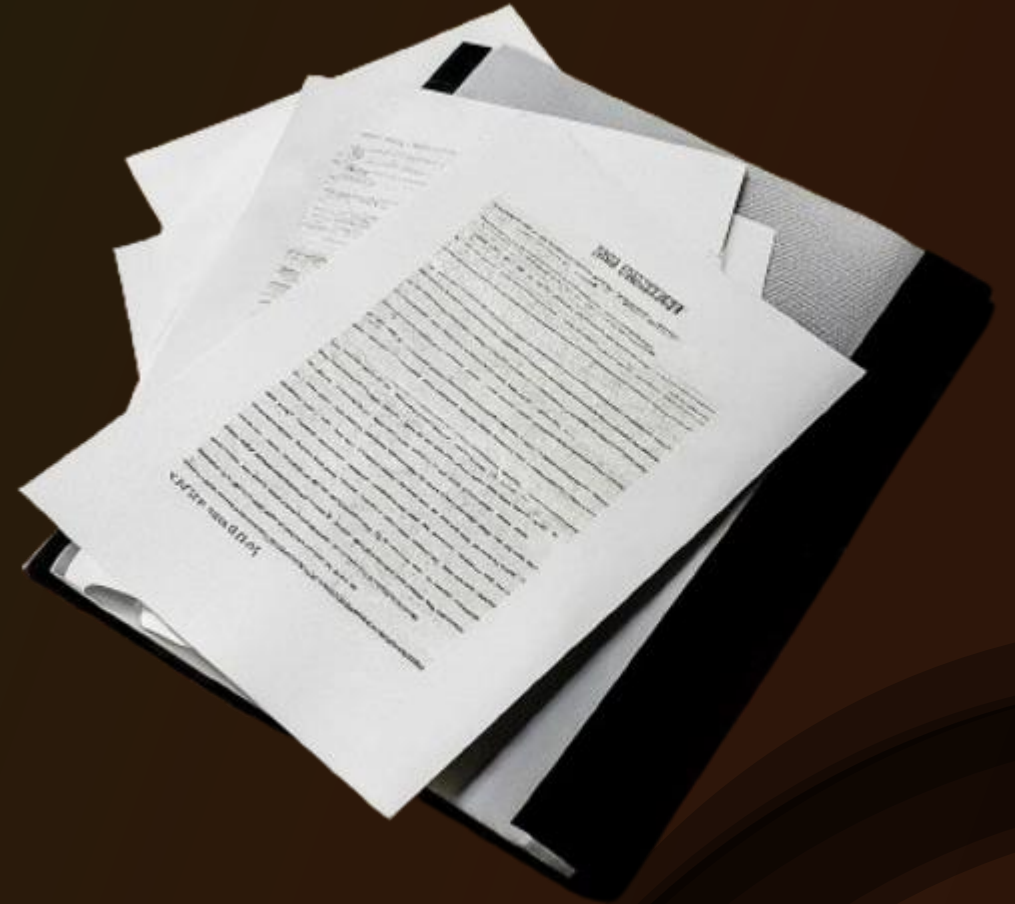
Game 1: The Mystery Unfolds: Tracking Richard's Last Steps

- Unravel the Mystery of Richard's Final Moments.
- Step into the shoes of a detective and piece together the puzzle of Richard's last steps.
- Follow his trail through the country manor, uncovering clues hidden in every room.
- Can your team collaborate to solve the mystery and determine where Richard received the fateful phone call?



Game 2: Fatal Findings: Dissecting the Deadly Artefact

- Your team discover an artefact that might be the key to saving the groundbreaking AI project.
- Use your problem-solving and analytical thinking skills to piece together the puzzle of the artefact's mysteries.
- Examine every detail, conduct root cause analysis and work collaboratively.
- Can your team unravel the secrets of the artefact and secure the future of the AI project?



Game 3: Who's to Blame? The Inquest into Ineptitude and Incompetence

- Now it's time to come out kicking and fighting.
- With the introduction of a detective to the game, you will be asked to adopt a persona.
- Navigating interpersonal conflicts and influencing your peers individually.
- Adopt your persona's challenges, defend their decisions, and persuade the detective of your innocence.



Your Facilitators

Imtiaz Kaderbhoy



Lewis Carroll

